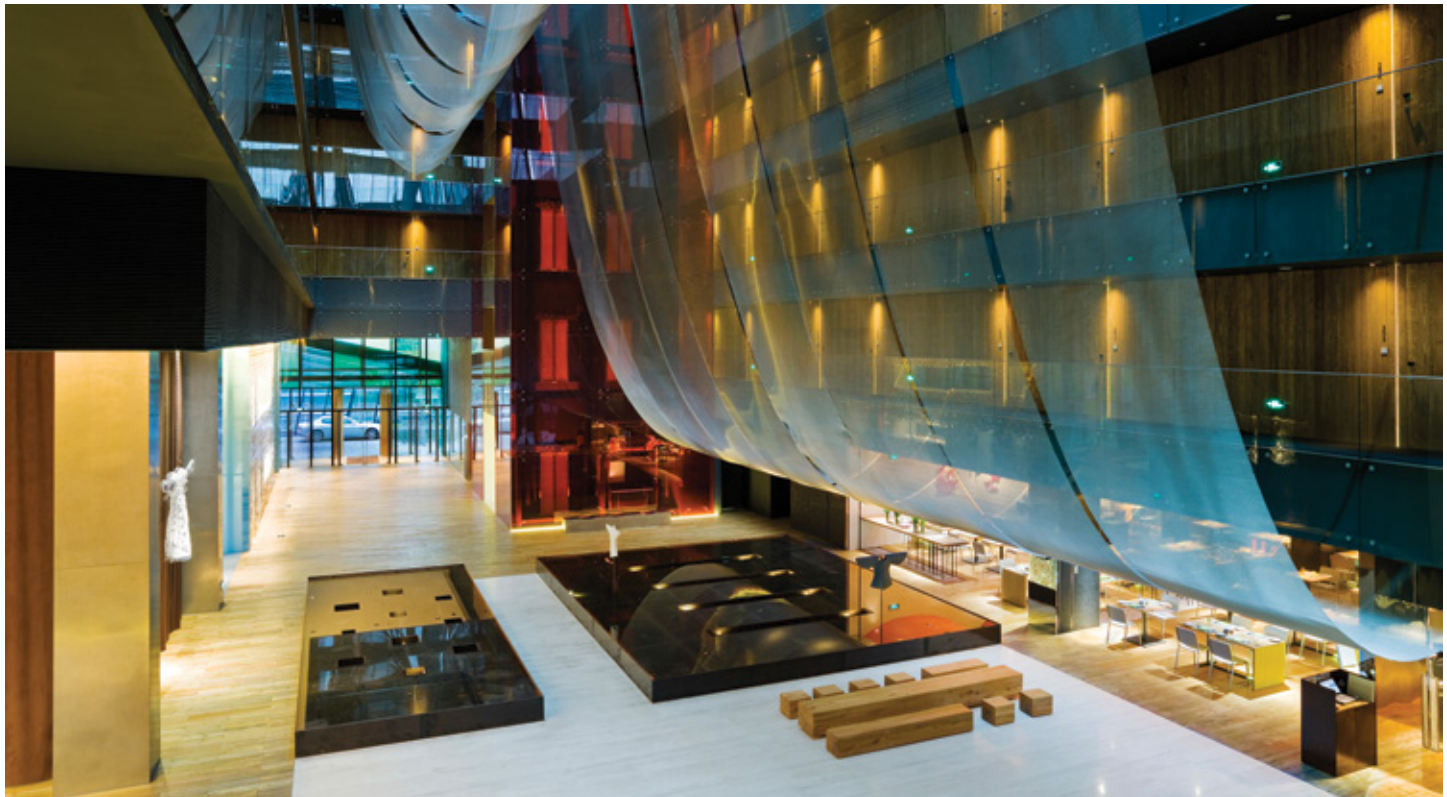


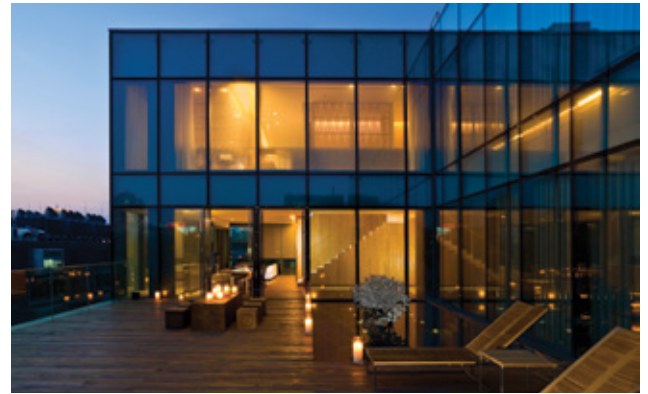
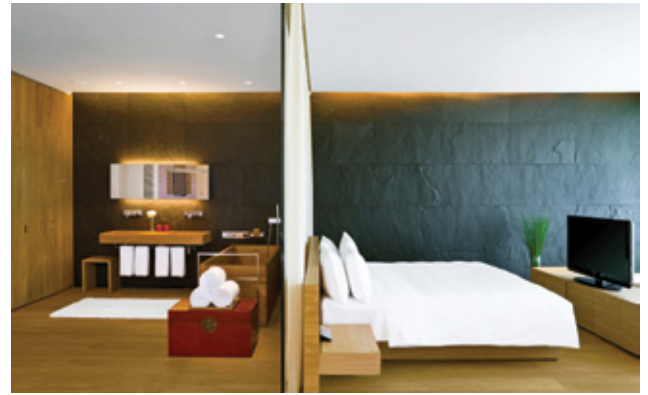
the
瑜 opposite
舍 house



the opposite house

The Opposite House is an intriguing urban hotel designed by eminent Japanese architect, Kengo Kuma. Its contemporary style and abundant space perfectly complement the refreshingly individual service. All of which go towards making this hotel a relaxing and unique experience.





studios & suites

There are 98 large studios ranging from 45m² to 115m² including 9 spacious suites and a penthouse duplex with an exclusive 240m² roof terrace. Uncluttered and contemporary, yet with subtle touches of traditional Chinese décor, they are designed to provide a sense of space, warmth and above all, comfort. Each room comes with natural wooden floors, king size bed and the most luxurious spa inspired bathrooms.

- Complimentary wireless Internet
- Complimentary mini-bar
- Luxury down bedding by Ploh
- Exclusive toiletries and premium bath essentials by Appelles
- LCD TV
- VGA connection and Denon in-room entertainment
- Spa inspired bathroom with rain shower, deep soaking oak tub
- Mood lighting system
- French press coffee
- Nespresso coffee machine in Studio 95 and above
- Smoking rooms available
- Accessible rooms available

other services & facilities

Leisure facilities include a gym featuring Technogym equipment, a 22-metre stainless steel swimming pool and two massage treatment rooms.

110m² event space for meetings and press conferences.

Airport transfers and bespoke city tours arranged by our Guest Experience team.

Complimentary early check-in and late check-out, subject to availability.





restaurants & bars

Sureño

12 noon – 10:30pm

A wood fired oven and open kitchen evoke the casual style of the Mediterranean with menus drawing on the freshest ingredients of Southern Europe.

Jing Yaa Tang

12 noon – 10:30pm

A collaboration with London-based restaurateur Alan Yau. A new restaurant concept that celebrates Beijing roast duck at its heart with a menu extending to a wide range of favourite dishes from different regions across China.

Village Café

6:30am – 11pm

A spacious and naturally lit setting, offering casual dining throughout the day with a contemporary interpretation of international favourites.

Mesh

5pm – 1am

A cool, contemporary lounge catering to sophisticated tastes with an impressive wine list and equally inspiring cocktails.



the location

Conveniently located in the cosmopolitan district of Sanlitun, the hotel is just 30 minutes from the airport and close to the central business district and embassies. It is also a central feature of Beijing's most exciting and innovative open-plan development – Taikoo Li Sanlitun where fashion mixes with dining, arts and entertainment.

the opposite house

Taikoo Li Sanlitun North
No.11 Sanlitun Road, Chaoyang District
Beijing, China 100027

瑜舍

中国北京市朝阳区三里屯路11号一号楼
三里屯太古里 北区 瑜舍



contact us

answers@theoppositehouse.com

Tel: +8610 6417 6688

Fax: +8610 6417 7799

www.theoppositehouse.com



GDS Code: PH

